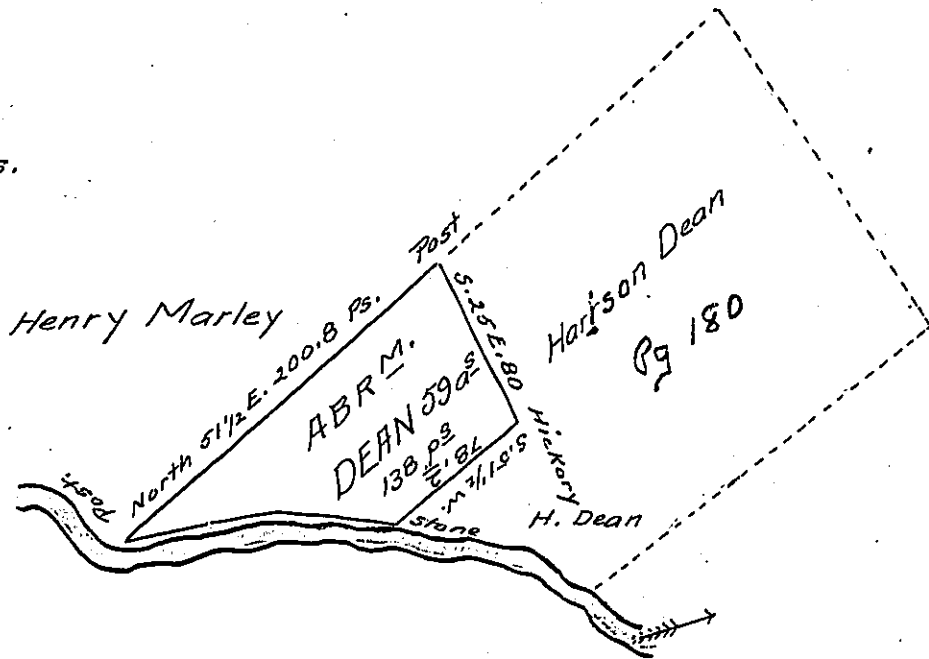


Courses & Distances up
French creek, Beginning at
a Stone thence N. 75 1/4 W. 22 Ps.

- N. 85 W. 20 Ps.
- N. 89 3/4 W. 18 Ps.
- S. 82 W. 28 Ps.
- S. 80 3/4 W. 42.4 Ps.



Surveyed January 1st. 1853, in pursuance of the settlement and
improvement of H. Dean bearing date in 1829 situate in Fairfield town-
ship Cr. Co. Containing 59 acres 138 perches & allowance of six per-
cent.

A. W. Mumford Co. S.R.

To J. P. Browley Esq.

Ser. General.

I do hereby certify that it does not appear from any documents
in my office that the above tract has been otherwise appropriated

A. W. Mumford Co. S.R.

IN TESTIMONY that the above is a copy of the original remaining on file in
the Department of Internal Affairs of Pennsylvania, made
conformably to an Act of Assembly approved the 16th day of
February, 1833, I have hereunto set my Hand and caused
the Seal of said Department to be affixed at Harrisburg,
this Ninth day of August 1904

Isaac R. Brown
Secretary of Internal Affairs.